

AMED METAL



Amed Metal is a contemporary dining chair with a comfortable upholstered seat and backrest on steel legs which are plastic tipped. The steel base can be finished in chrome, stainless steels and black powder coating. Amed Metal is also available with an adjuster base which is done in chrome and brass finish. The seat has a steel structure with an "S" shape springs for extra flexibility and strength. This steel frame is molded by an injecting polyurethane foam. Amed Metal is suitable for both residential and commercial use.

DIMENSIONS

31"h x 17"w x 21"d

WEIGHT

22 lbs

SPECIAL ORDER

min. of 8 required

COM req.

1.3 yd

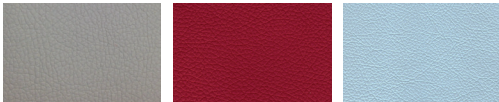
BASE

Chrome / Black Powder/
Stainless Steel

ADJUSTER BASE

Chrome / Brass

LEATHERETTE

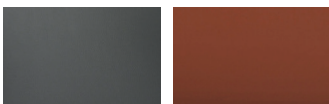


light grey

red

blue

PPM-FR



grey

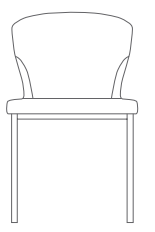
cinnamon

FABRIC (Camira-Era)



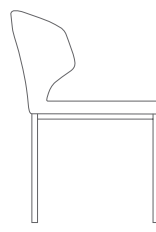
grey

red



17" 43

31" 78.7



21" 53.3

18" 45.7