

AMED + (PLUS) METAL



Amed + (PLUS) Metal is an ergonomic dining chair with a comfortable upholstered seat and backrest on chrome steel legs which are plastic tipped. The seat has a steel structure with "S" shape springs for extra flexibility and strength. The chair is suitable for both residential and commercial use.

DIMENSIONS

32.5"h x 20"w x 22.5"d

WEIGHT

23 lbs

SPECIAL ORDER

min. of 8 required

COM req.

1.4 yd

BASE

Chrome / Black Powder/
Stainless Steel

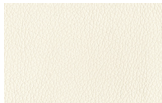
ADJUSTER BASE

Chrome

LEATHERETTE



black



white

PPM-FR



caramel

WOOL (CAMIRA)



dark grey

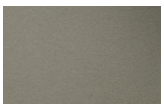


silver



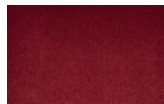
orange

FABRIC (CAMIRA)

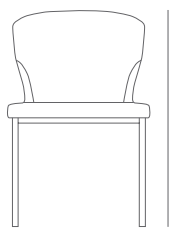


beige

VELVET

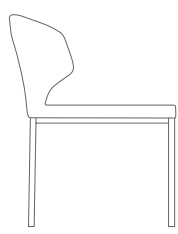


cherry



20" 50.8

32½" 81



22½" 57

18" 45.7