

AMED + (PLUS) STRETCHERS



Amed + (PLUS) Stretchers is an ergonomic dining chair with a comfortable upholstered seat and backrest on solid beech legs tipped with screwed plastic caps and with strengthened side stretchers. The seat has a steel structure with "S" shape springs for extra flexibility and strength. This steel frame is molded by an injecting polyurethane foam. Amed + (PLUS) Stretchers is suitable for both residential and commercial use.

DIMENSIONS

32.5"h x 20"w x 22.5"d

WEIGHT

23 lbs

SPECIAL ORDER

min. of 8 required

COM req.

1.4 yd

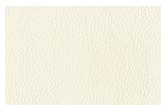
BASE

Beech Walnut Finish

LEATHERETTE

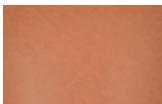


black



white

PPM-FR



caramel

WOOL (CAMIRA)



dark grey

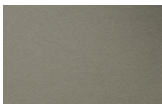


silver



orange

FABRIC (CAMIRA)

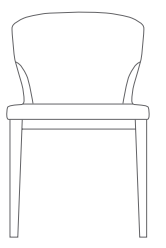


beige

VELVET

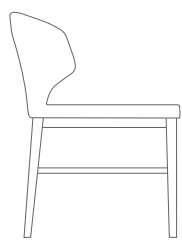


cherry



20" 50.8

32½" 81



22½" 57

18" 45.7