

# BOTTEGA ANA STOOLS



Bottega Ana is a unique dining chair with a comfortable upholstered seat and backrest on steel legs finished in black with gold bracelet and walnut finish with stainless steel polished bracelet. The seat has a steel structure with "S" shape springs for extra flexibility and strength. This steel frame is molded by an injecting polyurethane foam. This contemporary chair is suitable for both residential and commercial use.

**DIMENSIONS**

38"h x 24"w x 23"d  
43½"h x 24"w x 23"d

**WEIGHT**

15 lbs

**CUBIC FEET**

8.5

**SPECIAL ORDER**

min. of 8 required

**COM req.**

1.5 yd

**BASE**

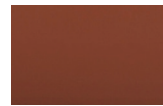
Black Finish with  
Gold Bracelet & Footrest/  
Walnut Veneer with S. Steel  
Bracelet & Footrest

**LEATHERETTE**



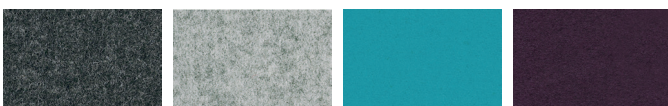
black white light grey grey

**PPM**



cinnamon

**WOOL (CAMIRA)**



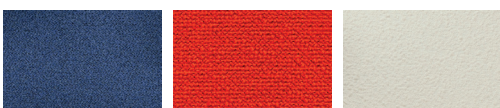
dark grey silver turquoise deep maroon

**FABRIC (Camira-Era)**



grey red

**BOUCLE FABRIC**



blue-black orange (Camira) Off White (Camira)

**VELVET**



cherry



24" 61



23" 58



24" 61



23" 58