

# BOTTEGA ANA



Bottega Ana is a unique dining chair with a comfortable upholstered seat and backrest on steel legs finished in black with gold bracelet and walnut finish with stainless steel polished bracelet. Each leg is tipped with a plastic glide screwed into the foot. The seat has a steel structure with "S" shape springs for extra flexibility and strength. This steel frame is molded by an injecting polyurethane foam. This contemporary chair is suitable for both residential and commercial use.

**DIMENSIONS**

31.8"h x 24"w x 22.8"d

**WEIGHT**

20 lbs

**CUBIC FEET**

8.5

**SPECIAL ORDER**

min. of 8 required

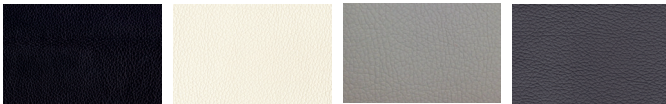
**COM req.**

1.5 yd

**BASE**

Black Finish with Gold Bracelet / Walnut Veneer with S. Steel Bracelet

**LEATHERETTE**



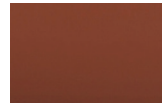
black

white

light grey

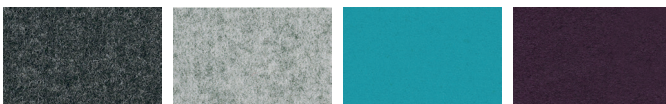
grey

**PPM**



cinnamon

**WOOL (CAMIRA)**



dark grey

silver

turquoise

deep maroon

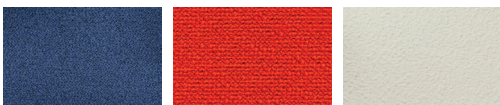
**FABRIC (Camira-Era)**



grey

red

**BOUCLE FABRIC**



blue-black

orange (Camira)

Off White (Camira)

**VELVET**



cherry

