

BOTTEGA MW STOOLS



Bottega MW Stool is a unique bar and counter stool with a comfortable upholstered seat on a steel frame available in variety of different colour options and finishes. Each leg is tipped with a plastic glides. The seat has a steel structure with "S" shape springs for extra flexibility and strength. This steel frame is molded by an injecting polyurethane foam. Bottega MW stool is suitable for both residential and commercial use.

DIMENSIONS

38"h x 24"w x 23"d
43½"h x 24"w x 23"d

WEIGHT

15 lbs

CUBIC FEET

8.5

SPECIAL ORDER

min. of 8 required

COM req.

1.5 yd

BASE

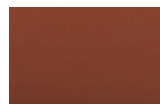
Walnut & Natural Veneer
Steel / Stainless Steel /
Black Finish

LEATHERETTE



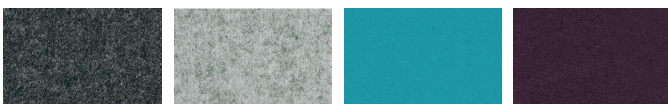
black white light grey grey

PPM



cinnamon

WOOL (CAMIRA)



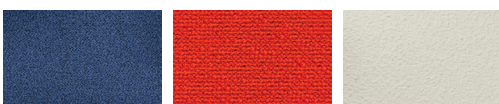
dark grey silver turquoise deep maroon

FABRIC (Camira-Era)



grey red

BOUCLE FABRIC



blue-black orange (Camira) Off White (Camira)

VELVET



cherry



24" 61



23" 58



24" 61



23" 58