

# BOTTEGA MW



Bottega MW is a contemporary dining chair with a comfortable upholstered seat and backrest on veneer steel dowel legs available in black powder and stainless steel finish. MW Plus is available in natural and walnut veneer steel finish. Each leg is tipped with a plastic glide screwed into the foot. The seat has a steel structure with "S" shape springs for extra flexibility and strength. This contemporary chair is suitable for both residential and commercial use.

**DIMENSIONS**

31.8"h x 24"w x 22.8"d

**WEIGHT**

13 lbs

**CUBIC FEET**

8.5

**SPECIAL ORDER**

min. of 8 required

**COM req.**

1.5 yd

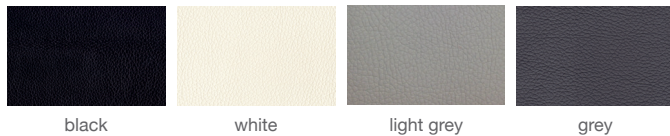
**MW BASE**

Black Finish /  
Stainless Steel

**MW PLUS BASE**

Natural & Walnut  
Veneer Steel

**LEATHERETTE**



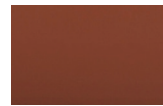
black

white

light grey

grey

**PPM**



cinnamon

**WOOL (CAMIRA)**



dark grey

silver

turquoise

deep maroon

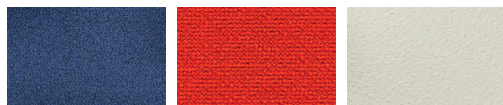
**FABRIC (Camira-Era)**



grey

red

**BOUCLE FABRIC**



blue-black

orange (Camira)

Off White (Camira)

**VELVET**



cherry



31.8" 80.7

24" 61



25½" 64.8

18" 45.7

22.8" 58