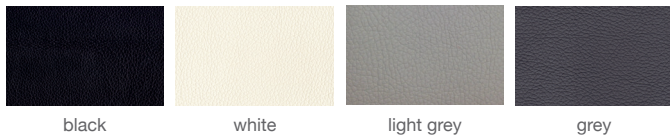


# BOTTEGA PISTON



Bottega Piston is a unique stool with a comfortable upholstered seat and backrest on an adjustable gas piston base which swivels and also adjusts easily from a counter height to a bar height with a lever that activates the gas piston mechanism. The solid steel round base is available in brushed and polished stainless steel. The seat has a steel structure with "S" shape springs for extra flexibility and strength. This steel frame molded by an injecting polyurethane foam.

## LEATHERETTE



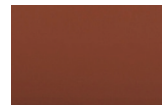
black

white

light grey

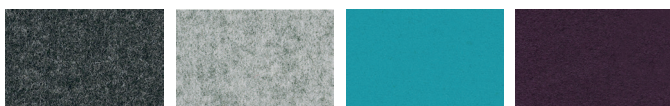
grey

## PPM



cinnamon

## WOOL (CAMIRA)



dark grey

silver

turquoise

deep maroon

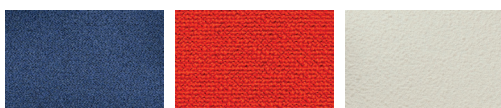
## FABRIC (Camira-Era)



grey

red

## BOUCLE FABRIC



blue-black

orange (Camira)

Off White (Camira)

## VELVET



cherry

## DIMENSIONS

31-39"h x 24"w x 23"d

## WEIGHT

18 lbs

## CUBIC FEET

8.5

## SPECIAL ORDER

min. of 8 required

## COM req.

1.5 yd

## HALF FOOTREST BASE

Brushed & Polished  
Stainless Steel / Brass /  
Polished Gold

## T / FULL FOOTREST BASE

Brushed & Polished  
Stainless Steel



24" 61



23" 58



24" 61



23" 58