

# BOTTEGA PLYWOOD



Bottega Plywood is a contemporary dining chair with a comfortable upholstered seat and backrest on wood legs finished in American Walnut veneer, wenge and natural finish. Bottega Plywood has wood legs available in walnut finish. The seat has a steel structure with "S" shape springs for extra flexibility and strength. This steel frame molded by injecting polyurethane foam. This contemporary chair is suitable for both residential and commercial use.

**DIMENSIONS**

31.8"h x 24"w x 22.8"d

**WEIGHT**

13 lbs

**CUBIC FEET**

8.5

**SPECIAL ORDER**

min. of 8 required

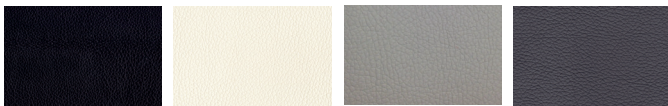
**COM req.**

1.5 yd

**BASE**

American Walnut Veneer /  
Wenge & Natural Finish

**LEATHERETTE**



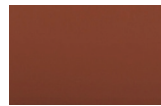
black

white

light grey

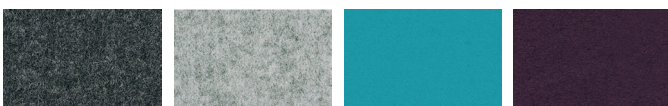
grey

**PPM**



cinnamon

**WOOL (CAMIRA)**



dark grey

silver

turquoise

deep maroon

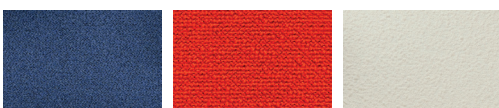
**FABRIC (Camira-Era)**



grey

red

**BOUCLE FABRIC**



blue-black

orange (Camira)

Off White (Camira)

**VELVET**



cherry

