

BOTTEGA ROUND



Bottega Round is a contemporary chair with a comfortable upholstered seat and backrest on a steel tube column and solid steel round base finished in brushed and polished stainless steel. The seat has a steel structure with "S" shape springs for extra flexibility and strength. This steel frame is molded by an injecting polyurethane foam. Bottega Round is suitable for both residential and commercial use.

DIMENSIONS

31.8"h x 24"w x 22.8"d

WEIGHT

15 lbs

CUBIC FEET

8.5

SPECIAL ORDER

min. of 8 required

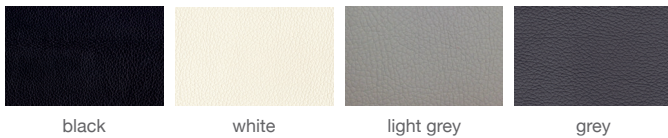
COM req.

1.5 yd

BASE

Burshed & Polished
Stainless Steel

LEATHERETTE



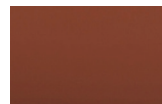
black

white

light grey

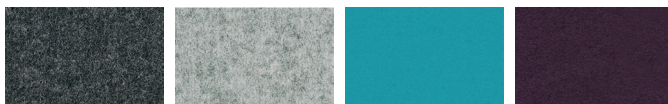
grey

PPM



cinnamon

WOOL (CAMIRA)



dark grey

silver

turquoise

deep maroon

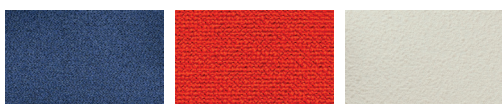
FABRIC (Camira-Era)



grey

red

BOUCLE FABRIC



blue-black

orange (Camira)

Off White (Camira)

VELVET



cherry

