

BOTTEGA SPIDER



Bottega Spider is a unique dining chair with a comfortable upholstered seat and backrest on a steel spider base with plastic glide tipped into each foot. The seat has a steel structure with "S" shape springs for extra flexibility and strength. This steel frame is molded by an injecting polyurethane foam. This contemporary chair is suitable for both residential and commercial use.

DIMENSIONS

31.8"h x 24"w x 22.8"d

WEIGHT

20 lbs

CUBIC FEET

8.5

SPECIAL ORDER

min. of 8 required

COM req.

1.5 yd

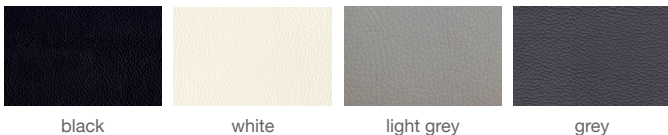
PLUS BASE

Aluminum / Aluminum
Brass Gold / Aluminum
Black Finish

WITH CASTER

Chrome

LEATHERETTE



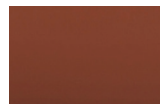
black

white

light grey

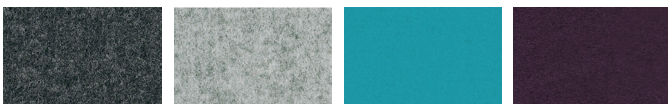
grey

PPM



cinnamon

WOOL (CAMIRA)



dark grey

silver

turquoise

deep maroon

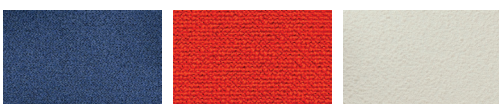
FABRIC (Camira-Era)



grey

red

BOUCLE FABRIC



blue-black

orange (Camira)

Off White (Camira)

VELVET



cherry



31.8" 80.7

24" 61



25 1/2" 64.8

18" 45.7

22.8" 58

* The height increases by 2" with casters.