

BOTTEGA STICK



Bottega Stick is a unique dining chair with a comfortable upholstered seat and backrest on steel base that's available in variety of finishes. The seat has a steel structure with "S" shape springs for extra flexibility and strength. This steel frame is molded by an injecting polyurethane foam. This contemporary chair is suitable for both residential and commercial use.

DIMENSIONS

31.8"h x 24"w x 22.8"d

WEIGHT

13 lbs

CUBIC FEET

8.5

SPECIAL ORDER

min. of 8 required

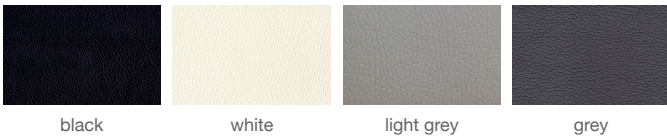
COM req.

1.5 yd

BASE

Natural & Walnut Veneer /
Black Finish / Gold Finish

LEATHERETTE



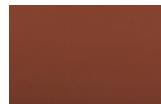
black

white

light grey

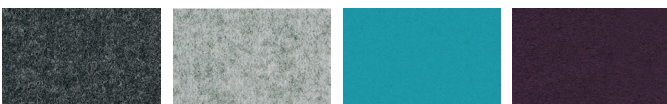
grey

PPM



cinnamon

WOOL (CAMIRA)



dark grey

silver

turquoise

deep maroon

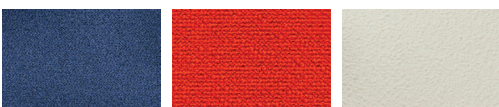
FABRIC (Camira-Era)



grey

red

BOUCLE FABRIC



blue-black

orange (Camira)

Off White (Camira)

VELVET



cherry



31.8" 80.7

24" 61



25 1/2" 64.8

18" 45.7

22.8" 58