

BOTTEGA SWORD



Bottega Sword is a unique dining chair with a comfortable upholstered seat and backrest on steel base available in various of different finishes. Each leg is tipped with a plastic glide screwed into the foot. The seat has a steel structure with "S" shape springs for extra flexibility and strength. This steel frame is molded by an injecting polyurethane foam. This contemporary chair is suitable for both residential and commercial use.

DIMENSIONS

31.8"h x 24"w x 22.8"d

WEIGHT

13 lbs

CUBIC FEET

8.5

SPECIAL ORDER

min. of 8 required

COM req.

1.5 yd

BASE

Natural & Walnut Veneer /
Black / Gold / Brass

LEATHERETTE



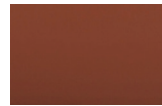
black

white

light grey

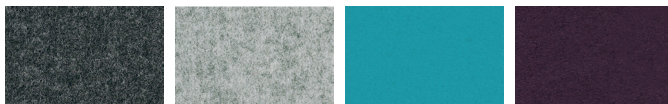
grey

PPM



cinnamon

WOOL (CAMIRA)



dark grey

silver

turquoise

deep maroon

FABRIC (Camira-Era)



grey

red

BOUCLE FABRIC



blue-black

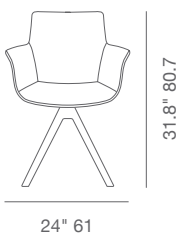
orange (Camira)

Off White (Camira)

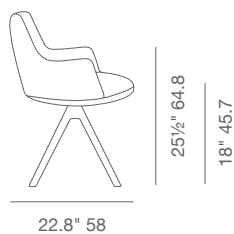
VELVET



cherry



24" 61



22.8" 58