

BOTTEGA WIRE STOOL



Bottega Wire is a contemporary counter and bar stool with a comfortable upholstered seat and backrest on solid chrome steel sled base. The steel sled base can also be finished in black or bone powder coating and gold plated finish. Each leg is tipped with a plastic glide embedded into the metal wire. The seat has a steel structure with "S" shape springs for extra flexibility and strength. Bottega Wire Stool is suitable for both residential and commercial use.

DIMENSIONS

38"h x 24"w x 23"d
43½"h x 24"w x 23"d

WEIGHT

15 lbs

CUBIC FEET

8.5

SPECIAL ORDER

min. of 8 required

COM req.

1.5 yd

BASE

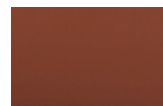
Chrome / Gold Plated /
Black & Bone Powder

LEATHERETTE



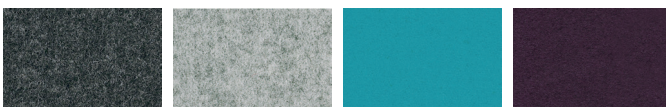
black white light grey grey

PPM



cinnamon

WOOL (CAMIRA)



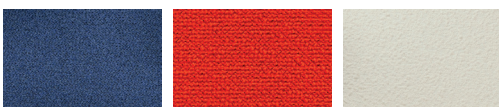
dark grey silver turquoise deep maroon

FABRIC (Camira-Era)



grey red

BOUCLE FABRIC



blue-black orange (Camira) Off White (Camira)

VELVET



cherry



43 1/2"

24" 61



29"

23" 58



38"

24" 61



24"

23" 58