

BOTTEGA WIRE



Bottega Wire is a contemporary dining chair with a comfortable upholstered seat and backrest on chrome steel sled base finished in variety of different colours. Each leg is tipped with a plastic glide embedded into the metal wire. The seat has a steel structure with "S" shape springs for extra flexibility and strength. This steel frame molded by an injecting polyurethane foam. Bottega Wire is suitable for both residential and commercial use.

DIMENSIONS

31.8"h x 24"w x 22.8"d

WEIGHT

13 lbs

CUBIC FEET

8.5

SPECIAL ORDER

min. of 8 required

COM req.

1.5 yd

BASE

Chrome / Gold Plated /
Black & Bone Powder

LEATHERETTE



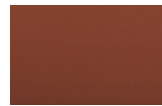
black

white

light grey

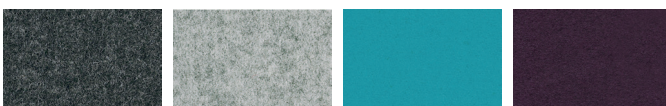
grey

PPM



cinnamon

WOOL (CAMIRA)



dark grey

silver

turquoise

deep maroon

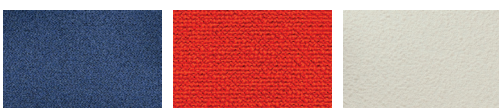
FABRIC (Camira-Era)



grey

red

BOUCLE FABRIC



blue-black

orange (Camira)

Off White (Camira)

VELVET



cherry



31.8" 80.7

24" 61



25½" 64.8

18" 45.7

22.8" 58