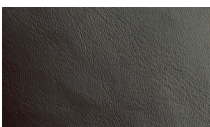


SENECA

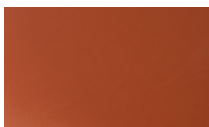


Seneca is an industrial style dining chair with an upholstered seat and natural cane back with walnut and black ash frame. The legs are finished in black and chrome. Seneca is designed by the Industrial Modern team and it's suitable for both residential and commercial use.

PPM-S

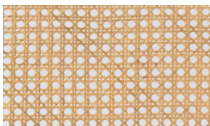


black



hazelnut

BACK



natural cane

DIMENSIONS

30.7"h x 18"w x 19.6"d

BOX SIZE

35"h x 18.8"w x 22.8"d
(2pcs/box)

WEIGHT

9.9 lbs

CUBIC FEET

8.7

SPECIAL ORDER

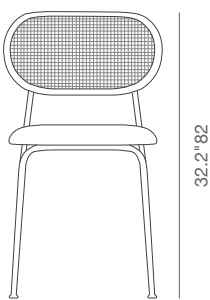
min. of 24 required

COM

0.65 yd

FRAME / BASE

Chrome / Black



18"45%



18"45%