

# MADISON PLYWOOD



Madison Plywood is a modern chair with a comfortable upholstered seat and backrest on plywood base. The seat has a steel structure with "S" shape springs for extra flexibility and strength. This steel frame is molded by injecting polyurethane foam. The chair is suitable for both residential and commercial use.

## LEATHERETTE



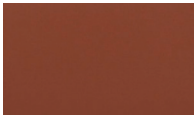
black

white

light grey

orange

## PPM



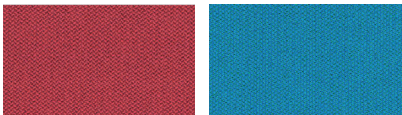
cinnamon

## LEATHER



caramel

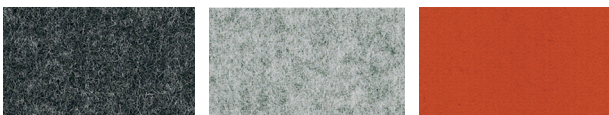
## FABRIC



red

turquoise

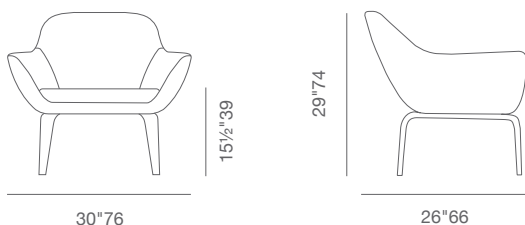
## CAMIRA



dark grey

silver

orange



30"76

15 1/2"39

29"74

26"66

## DIMENSIONS

30" w x 26" d x 29" h

## BOX SIZE

### Seat

28" x 30" x 21"

### Base

24 1/2" x 24 1/2" x 15 1/2"

## WEIGHT

33 lbs

## CUBIC FEET

15.6

## SPECIAL ORDER

min. of 24 required

## COM

2.2 yd

## BASE

Walnut / Natural Finish