

GAZEL MW



Gazel MW is a contemporary dining chair with a comfortable upholstered seat and backrest on veneer steel dowel legs available in black powder, natural as well as stainless steel finishes. Each leg is tipped with a plastic glide screwed into the foot. The seat has a steel structure with “S” shape springs for extra flexibility and strength. This steel frame is molded by an injecting polyurethane foam. This contemporary chair is suitable for both residential and commercial use.

DIMENSIONS

33"h x 21" w x 22"d

WEIGHT CAP

300 lb

SPECIAL ORDER

min. of 8 required

COM req.

1.3 yd

COL

23 sq. ft.

BASE

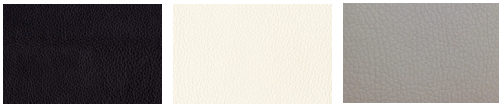
Stainless Steel

Black Finish

Walnut Veneer

Walnut Veneer

LEATHERETTE

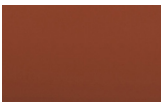


black

white

light grey

PPM (FR)



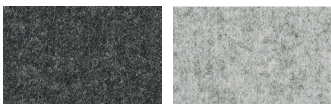
cinnamon

GENUINE LEATHER



caramel

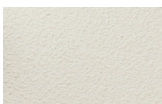
WOOL (CAMIRA)



dark grey

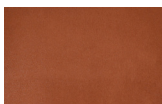
silver

BOUCLE



Off White (Camira)

NUBUCK

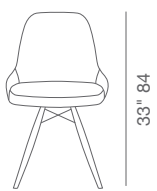


cognac

FABRIC (Camira-Era)



turquoise



33" 84

21" 53



17.7" 45

22" 56