

ATHENA SPIDER SWIVEL



Athena Spider is a contemporary dining chair with a comfortable upholstered seat and backrest on swivel spider legs. The base is available with automatic memory swivel option that is very convenient. The seat has a steel structure with "S" shape springs for extra flexibility and strength. This steel frame is molded by an injecting polyurethane foam. Athena Spider may be upholstered with variety of other colors as a special order with a minimum quantity requirement. The chair is suitable for residential use only. Athena Spider is designed by Industrial Modern Team.

DIMENSIONS

33"h x 22"w x 23½"d

WEIGHT CAP

250

COL

25 sq. ft.

SPECIAL ORDER

min. of 8 required

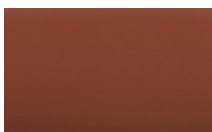
COM

1.4 yd

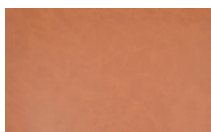
FRAME / BASE

Black Aluminium /
Aluminium /
Black Aluminium

PPM - FR

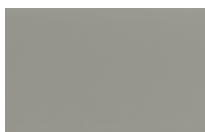


cinnamon



caramel

LEATHERETTE

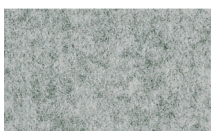


light grey

WOOL (CAMIRA)



dark grey



silver

BOUCLE FABRIC



black



32" 81

22" 55.8



18½" 47

23½" 59.6

27" 68½