

ATHENA PLYWOOD



Athena Plywood is a contemporary dining chair with a comfortable upholstered seat and backrest on plywood legs. The seat has a steel structure with "S" shape springs for extra flexibility and strength. This steel frame is molded by an injecting polyurethane foam. Athena Plywood may be upholstered with variety of other colors as a special order with a minimum of quantity required.

DIMENSIONS

33"h x 22"w x 23½"d

WEIGHT CAP

200 lbs

SPECIAL ORDER

min. of 8 required

COM

1.4 yd

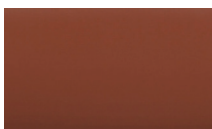
COL

25 sq. ft.

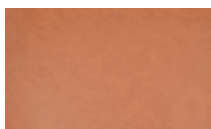
FRAME / BASE

American Walnut Veneer /
Wenge Finish / Natural Finish

PPM - FR



cinnamon



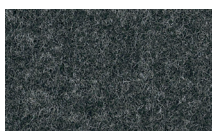
caramel

LEATHERETTE

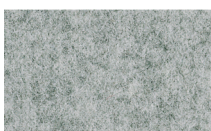


light grey

WOOL (CAMIRA)



dark grey



silver

BOUCLE FABRIC

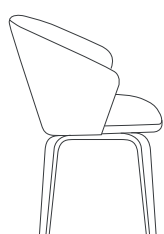


black



22" 55.8

33" 83.8



23½" 59½

19" 48

27" 68½