

ATHENA ANA



Athena Ana is a contemporary dining chair with a comfortable upholstered seat and backrest on steel base available in variety of different finish options. The seat has a steel structure with “S” shape springs for extra flexibility and strength. This steel frame is molded by an injecting polyurethane foam. Athena Ana may be upholstered with variety of other colors as a special order with a minimum of quantity required. This chair is suitable for residential use only.

DIMENSIONS

33"h x 22"w x 23½"d

WEIGHT CAP

200 lbs

SPECIAL ORDER

min. of 8 required

COM

1.4 yd

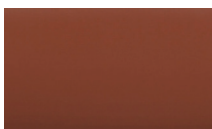
COL

25 sq. ft.

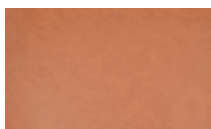
FRAME / BASE

Walnut Veneer (Chrome) /
Black Powder (Brass) /
Black Powder (Chrome)

PPM - FR



cinnamon



caramel

LEATHERETTE

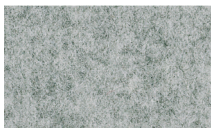


light grey

WOOL (CAMIRA)



dark grey



silver

BOUCLE FABRIC



black

