

ATHENA ROUND



Athena Round Swivel is a contemporary dining chair with a comfortable upholstered seat and backrest on a chrome steel tube column and solid steel round base. The seat has a steel structure with "S" shape springs for extra flexibility and strength. This steel frame molded by an injecting polyurethane foam. Athena Round may be upholstered with variety of other colors as a special order with a minimum quantity requirement. The chair is suitable for residential and commercial use.

DIMENSIONS

33"h x 22"w x 25"

WEIGHT

44 lbs

WEIGHT CAP

200 lbs

SPECIAL ORDER

min. of 8 required

COM

1.4 yd

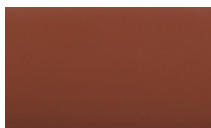
COL

25 sq. ft.

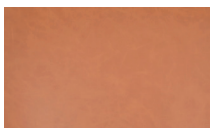
BASE

Stainless Steel (Brushed) /
Stainless Steel (Polished)

PPM - FR

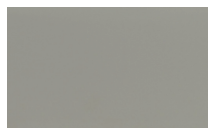


cinnamon



caramel

LEATHERETTE

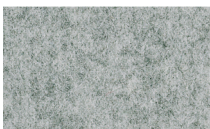


light grey

WOOL (CAMIRA)



dark grey



silver

BOUCLE FABRIC



black



33" 83.8

22" 55.8



19" 48

27" 68½

25" 63½