

ATHENA ANA STOOL



Athena Ana is a contemporary stool with a comfortable upholstered seat and backrest on steel legs available in black powder with gold bracelets and footrest and walnut veneer with stainless steel brushed bracelets and footrest. The seat has a steel structure with "S" shape springs for extra flexibility and strength. This steel frame is molded by an injecting polyurethane foam. This contemporary stool is suitable for both residential and commercial use.

DIMENSIONS

39-43.5"h x 22"w x 24"d

WEIGHT CAP

200 lbs

SPECIAL ORDER

min. of 8 required

COM

1.4 yd

COL

25 sq. ft.

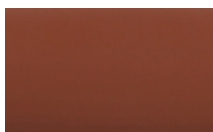
BASE

Walnut Veneer Steel /
Black Finish /

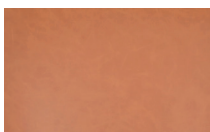
BASE W/GOLD FOOTREST

Black Finish

PPM - FR



cinnamon



caramel

LEATHERETTE

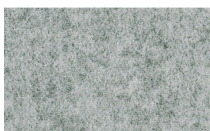


light grey

WOOL (CAMIRA)



dark grey



silver

BOUCLE FABRIC



black



22" 55.8

39" 99 - 43½" 110½



24" 61

24" 61 - 29" 73½

32" 81 - 37" 94