

ATHENA BABA STOOL



Athena Baba is a contemporary swivel stool with a comfortable upholstered seat and backrest on wood legs available in Sungkai Wood white oak finish as well as Teak Wenge finish. The seat has a steel structure with "S" shape springs for extra flexibility and strength. This steel frame is molded by an injecting polyurethane foam. This contemporary stool is suitable for residential use.

DIMENSIONS

39-43.5"h x 22"w x 24"d

WEIGHT CAP

200 lbs

SPECIAL ORDER

min. of 8 required

COM

1.4 yd

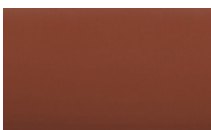
COL

25 sq. ft.

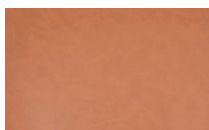
BASE

Sungkai White Oak Finish /
Teak Wenge Finish

PPM - FR

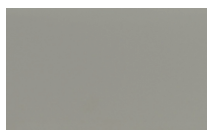


cinnamon



caramel

LEATHERETTE

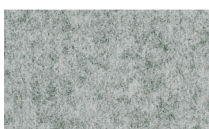


light grey

WOOL (CAMIRA)



dark grey



silver

BOUCLE FABRIC



black



22" 55.8

39" 99 - 43 1/2" 110 1/2



24" 61

24" 61 - 29" 73 1/2

32" 81 - 37" 94