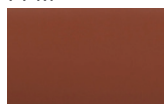


AVANOS CATTELAN STOOL



Avanos Cattelan is a contemporary counter and bar stool with a comfortable upholstered seat and backrest on solid steel base available in brass, black and chrome finish. Each leg is tipped with a plastic glide embedded into the metal wire. The seat has a steel structure with "S" shape springs for extra flexibility and strength. Avanos Cattelan Stool is suitable for both residential and commercial use.

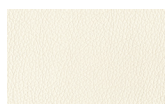
PPM



cinnamon



caramel



white



black

LEATHERETTE

WOOL (CAMIRA)



silver

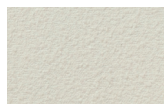


dark grey



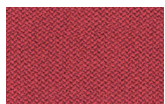
petrol blue

BOUCLE FABRIC



off white

FABRIC (CAMIRA)



red

DIMENSIONS

44"h x 21"w x 22"d

39"h x 21"w x 22"d

SPECIAL ORDER

min. of 8 required

COM

1.55 yd

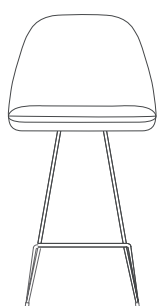
WEIGHT CAP

300 lbs

COL

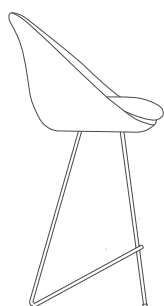
25 sq. ft.

BASE

Chrome / Black Finish /
Brass Finish


21" 53.3

39" 99 - 44" 111.7



22" 55.8

23½" 59.7 - 28½" 72.4